



## November Newsletter 2021

### Operation Santa Claus

*We're on a mission to spread some Christmas joy this winter by supporting families in need. Our aim is to provide as many children as possible with a present from Santa this Christmas.*

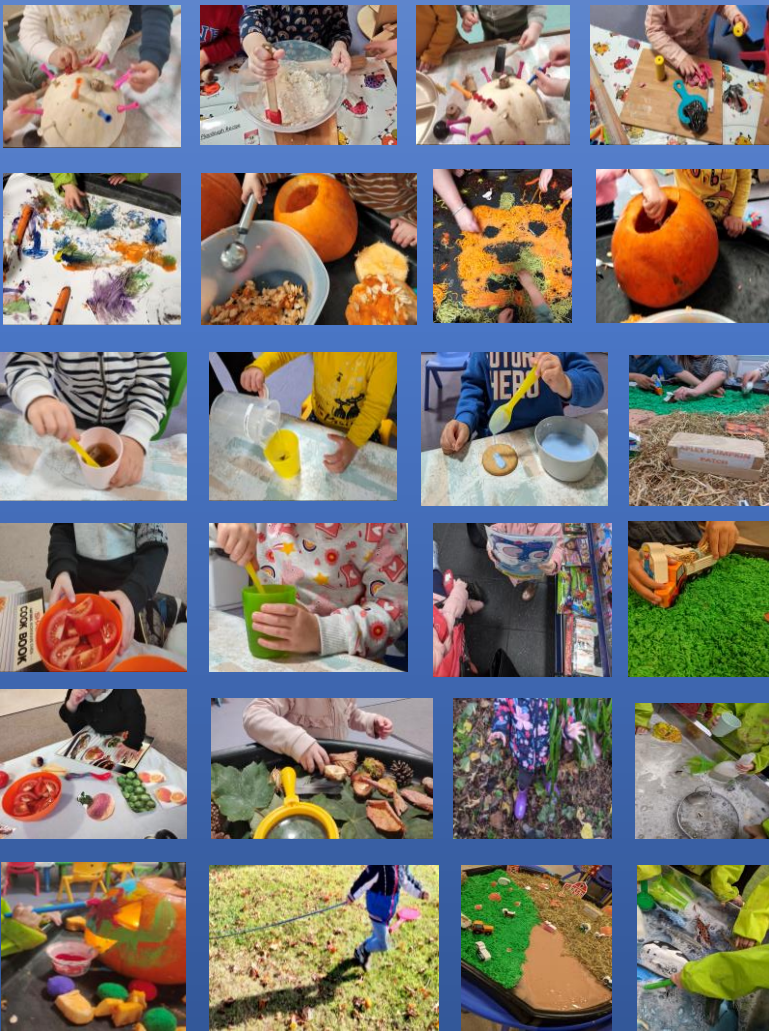
*We would really appreciate any support/donations throughout November.*

*All gifts received will be going to refugee children or children in poverty.*

*Thank you for your continued support.*



## A snippet of what we've been up too in October!



### Dates For Your Diary.

**October Holidays** - Term time only children will not be in nursery Monday 20<sup>th</sup> December 2021 – Monday 3<sup>rd</sup> January 2022.

#### Christmas Closure

**Nursery is closed to all children, Friday 24<sup>th</sup> December - Monday 3<sup>rd</sup> January 2022.**

**Nursery will reopen Tuesday 4<sup>th</sup> January 2022.**

### Applying For School

Please can all Preschool parents make sure they have applied for your child's school place.

We advise all parents to put 3 choices down just incase your first choice isn't accepted.

[https://www.telford.gov.uk/info/20026/school\\_admissions/3247/applying\\_for\\_a\\_school\\_place](https://www.telford.gov.uk/info/20026/school_admissions/3247/applying_for_a_school_place)

YEAR GROUP	CLOSING DATE
Reception (born between 1 September 2017 - 31 August 2018)	15 January 2022

**Thank you to everyone who made a donation for our harvest festival food collection, for the local food bank.**



## Facebook Page

If you haven't already please like our Facebook page [Apley Village Day Nursery - Home | Facebook](#) We have been updating our page regularly with all the fantastic activities we've been doing at nursery.



## Pegs

Please can all parents be mindful when getting items off your child's peg, if you knock items off other pegs please pass this to a member of staff in the room for them to hang back up on the correct peg.

Thank you



## Contact Details

Please can we ask that you keep nursery updated with any changes to contact details, and make sure we have work contact numbers in case of an emergency. Also, it is extremely important that we have photographs of anybody different that will be dropping off or collecting your child.

## Coats & Wellies

Now the Autumn weather is arriving please could all children bring a labelled coat and wellies into nursery ready for lots of outdoor fun.

Thank you



## Messy Activities

With Christmas fast approaching the children will be participating in lots of fun messy activities indoors and outdoors. Please can we politely ask all parents to bring children into nursery in old clothing.

Thank you



## Eligibility Codes for 3&4 year funding.

Just a quick reminder to check and update your code every three months. This is something that you will need to do at home as we are unable to do it at nursery.

[www.childcarechoices.gov.uk](http://www.childcarechoices.gov.uk)

## Learning Book

When your child starts nursery, you will be able to access their progress through their own individual Learning Book .

You will receive an email from Learning Book that allows you to create your own password.

In addition to all of the activities that we do during the day at nursery, please feel free to add any information and observations that your child may have done whilst being at home.

## Childcare Funding Choices

For different childcare funding options and to see what is available for you please see the below link. Once the website has opened, follow the link for the option that applies to yourself.

<https://www.childcarechoices.gov.uk/>



## Medication

Just a reminder to all parents, as per the medication section on your child's enrolment form, all medication must be prescribed by the doctors and clearly state your child's name and date of birth. All children must be on prescribed medication at least **24 hours** before returning to nursery, in case of any allergic reaction that may occur.

Thank you for your cooperation.

## Invoices

Just a reminder that the invoices are emailed out around the 25<sup>th</sup> of the month. If you haven't received the email, please check your junk folder and contact us if you need us to resend it. Payments should be made by 1st of the month, payments not cleared by midnight on 3rd of the month will incur a late payment charge.

# How To Keep Your Teeth Healthy

## Encourage Healthy Eating & Drinking

- Eat plenty of fruit and vegetables.
- Avoid to many sweets and sugary drinks.
- Drink plenty of water.



For more information on How to keep your teeth healthy please have a look on the NHS Website linked below:  
[www.nhs.uk/live-well/healthy-body/taking-care-of-childrens-teeth](http://www.nhs.uk/live-well/healthy-body/taking-care-of-childrens-teeth)

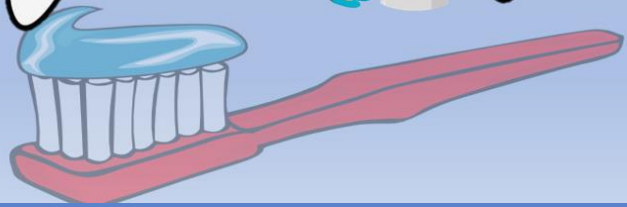
## Encourage Regular Toothbrushing

- Brush your teeth twice a day.
- Use a smear (under 3) and a pea sized amount (over 3) of family fluoride toothpaste.
- Supervise brushing until 7 years of age.
- Don't rinse after brushing.



## Visit A Dentist Regularly

- Children should visit a dentist from when they get their first milk teeth.
- Children should be seen regularly.
- All children are entitled to free dental care.



## Coronavirus Information

### Face Masks

We kindly request that you continue to wear a face mask in nursery, however you may enter without if you do not feel comfortable wearing one.

### Dropping off and collection

- If you are dropping off early, please wait in your car until nursery is open.
  - Please sanitise your hands on entering nursery.
  - Ideally only one person to drop off or collect.
- Please be mindful while passing other people in the corridors or when using the outside path up to preschool.
- Try to limit the time in the room on drop off and collection, however we do understand that you may need to pass information to the staff.
- Staff will give you a brief handover at the end of the day. This may not be as in-depth as at the start of the year, but we have asked them to be as swift as possible to reduce your time in nursery.

### Symptoms and what happens

If your child develops any symptoms at nursery or has a temperature that is over 37.8 we will contact, you to collect them.

They will then need to self isolate and have a PCR COVID test, **not** a lateral flow test. Your child can return to nursery if the test is negative.

Our guidelines are to report any positive cases to Telford and Wrekin Health Protection Hub.

### Communicating with Nursery

If you are waiting for a Coronavirus test result for anyone within your household including children or have any symptoms you have a duty of care to inform the nursery.

### When to stay home

- You must keep your child at home until you receive a negative result.
- If your child shows any symptoms you must keep them home until they have a full COVID test.
- Nursery must be informed of all results.

### Cough

If your child has a cough that you are 100% sure is not Coronavirus you must still get a test.

Sending children home has a huge impact on parents so if we can ask that children with a cough to stay home this will reduce the spread and therefore reduce the amount of children having to go through the ordeal of a test.